

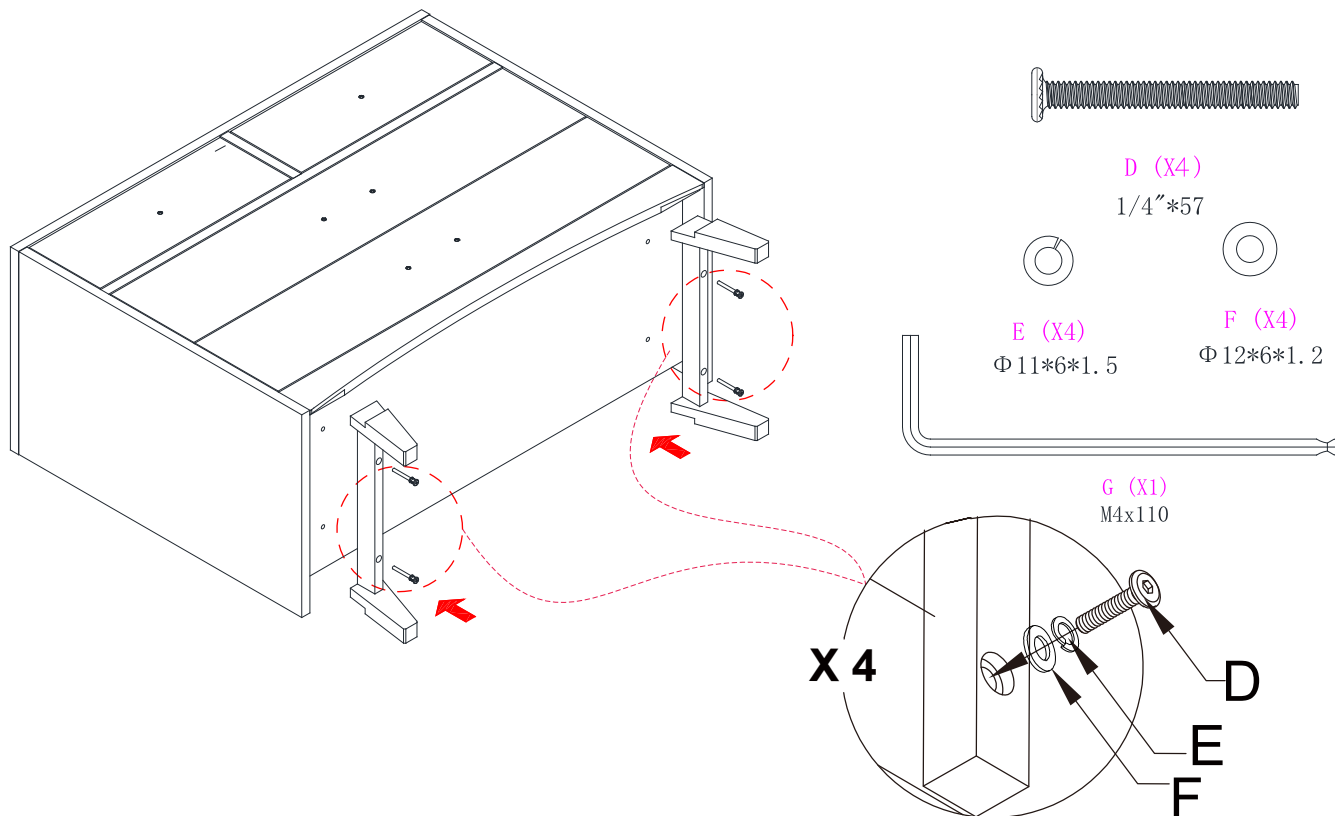


IMPORTED BY C&T International, Inc. / IMPORTE` PAR de C&T International, Inc.
105 Stonehurst Ct Northvale, NJ 07647 U.S.A. Tel, 201- 531-1919 Fax, 201- 531-1920
CANADA ADDRESS:
3453, DU PRESIDENT KENNEDY LAC MEGANTIC, QUEBEC, CANADA G6B 2Y4
Website: www.sorellefurniture.com / Site Internet : www.sorellefurniture.com

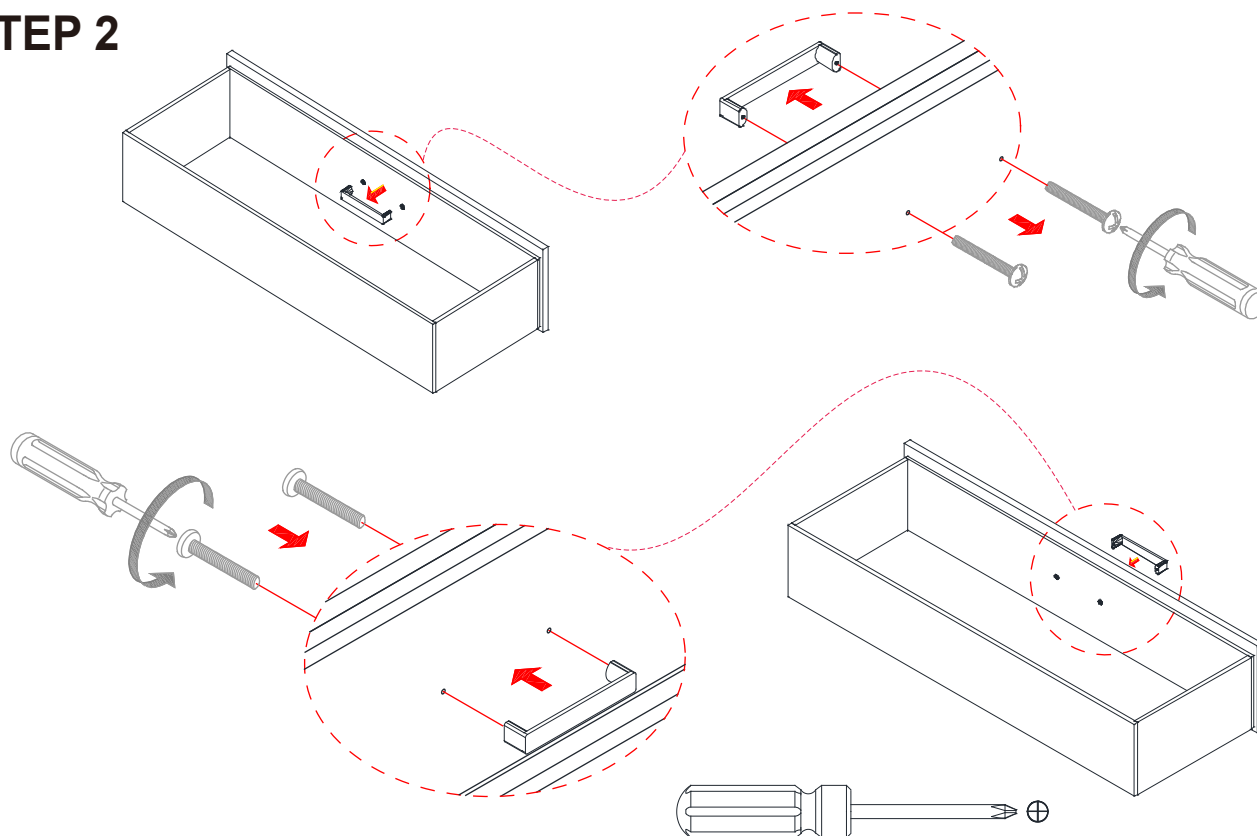
READ ALL INSTRUCTIONS **BEFORE** ASSEMBLING AND **USE** OF THE DRAWER DRESSER

STEP 1

Hardware List

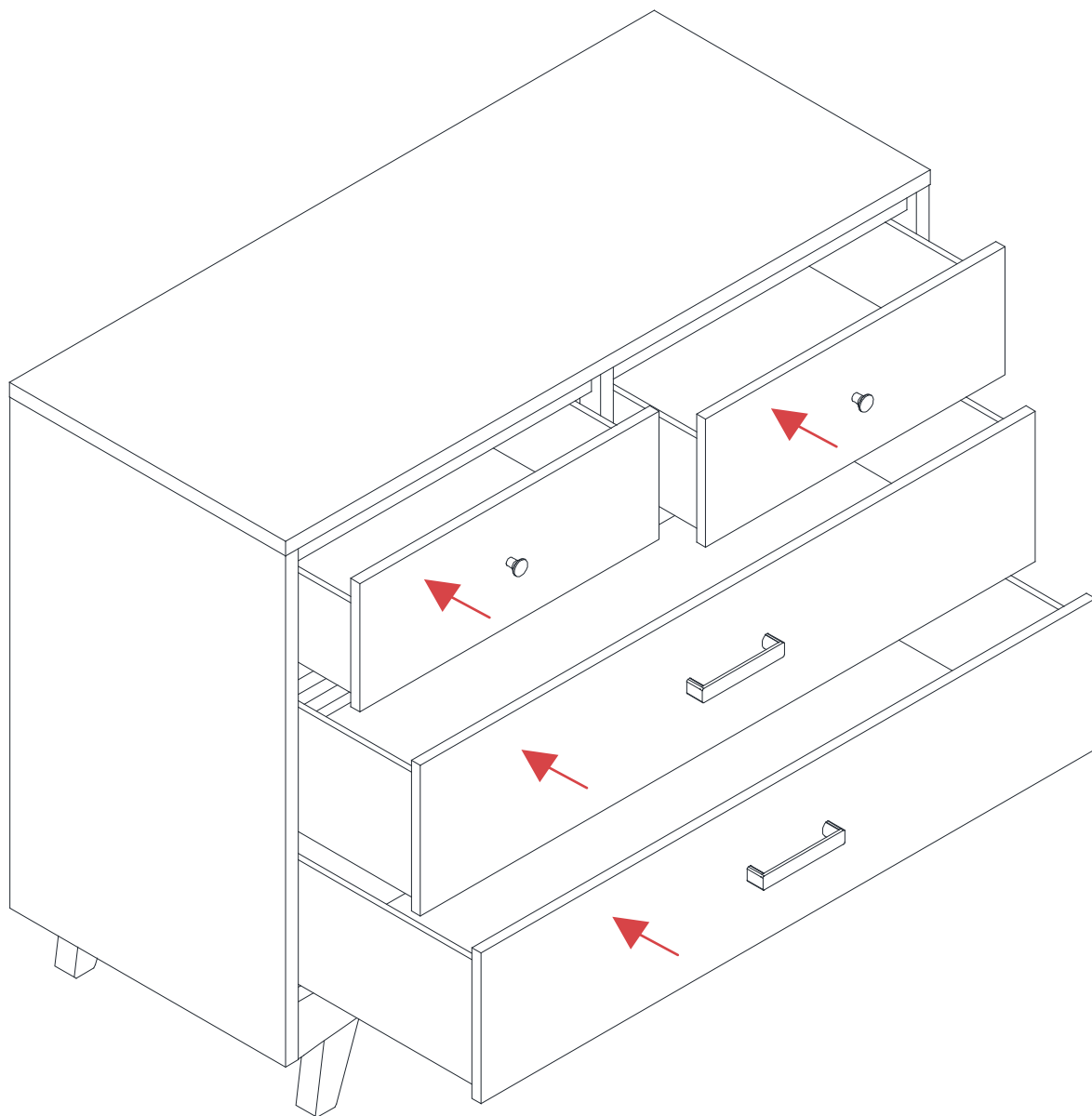


STEP 2



Philips Screwdriver (Not included)

STEP 3



Important Information:

Thank you for selecting a C&T product. To ensure the best performance from your Dresser, please read these instructions carefully.

Carefully remove and lay out all parts. Familiarize yourself with all diagrams. Hardware enclosed in the sack should correspond with hardware list. Be sure all are included and quantities are correct. Store this instruction manual for future reference.